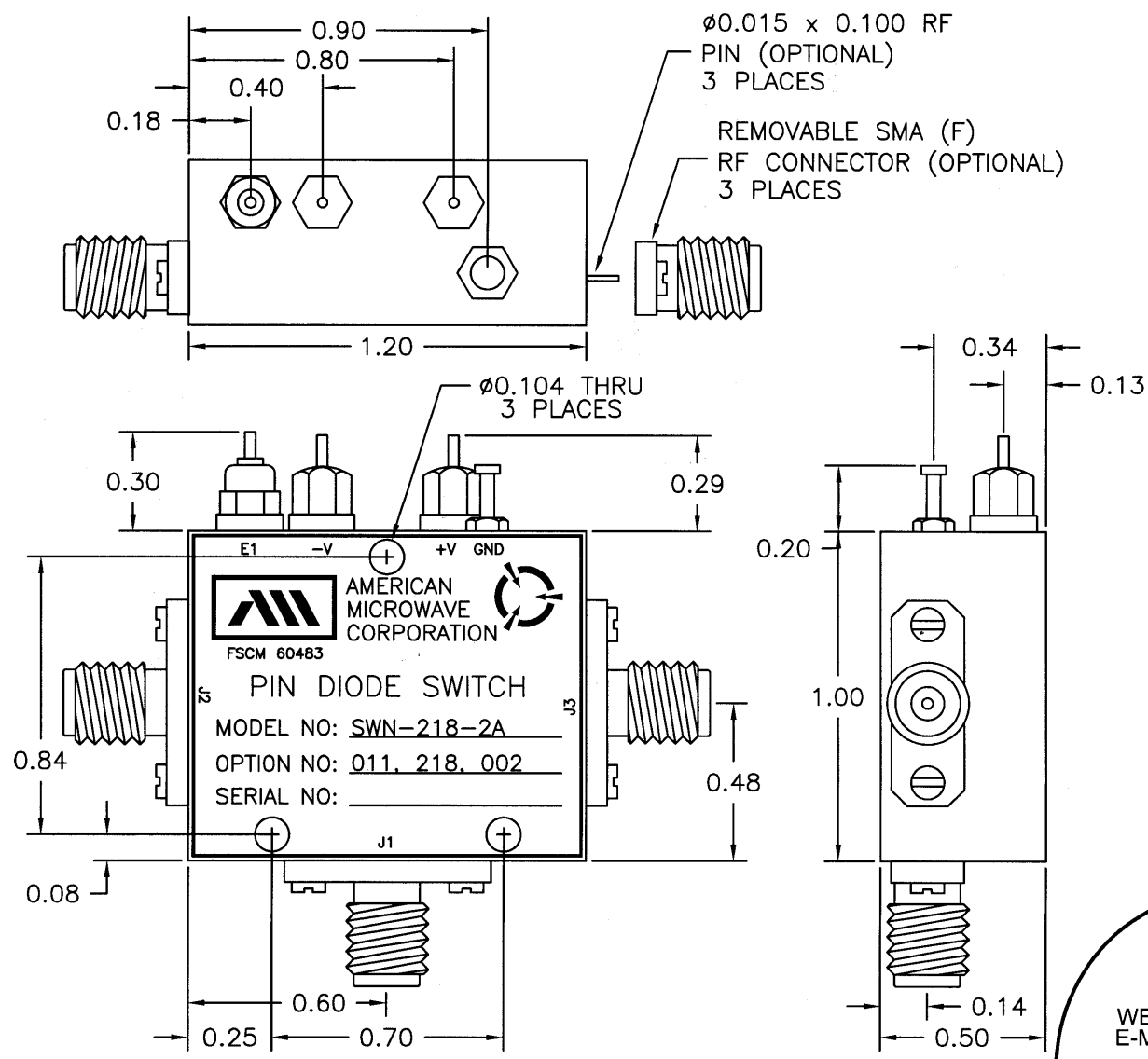


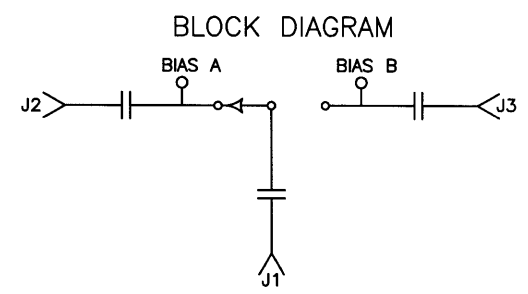
DESCRIPTION


AMC MODEL SWN-218-2A OPTIONS 011, 218, 002 IS A SINGLE POLE TWO THROW, REFLECTIVE SWITCH MODULE WITH VERY LOW INSERTION LOSS, HIGH ISOLATION AND WITH INTEGRAL TTL DRIVER, DESIGNED FOR 2 TO 18 GHz OPERATION.

REVISIONS				
ZONE	REV.	DESCRIPTION	DATE	APPROVED
	-	ORIGINAL RELEASE JOB# 501003-1	1/29/05	



MECHANICAL OUTLINE




 AMERICAN MICROWAVE CORPORATION
 FSCM 60483
 PIN DIODE SWITCH
 MODEL NO: SWN-218-2A
 OPTION NO: 011, 218, 002
 SERIAL NO: _____

AMERICAN MICROWAVE CORPORATION
 7311-G GROVE ROAD
 FREDERICK, MARYLAND 21704 USA
 TEL: 301-662-4700 FAX: 301-662-4938
 WEBSITE: www.americanmicrowavecorp.com
 E-MAIL: sales@americanmicrowavecorp.com
 ISO 9001:2000 CERTIFIED



ALL DIMENSIONS ARE IN INCHES
 TOLERANCES:
 X.XX ± 0.020
 X.XXX ± 0.010

APPROVALS		DATE	TITLE		
DRAWN <i>WJL</i>		1/29/05	MECHANICAL OUTLINE		
CHECKED			SWN-218-2A		
ISSUED			OPTIONS 011, 218, 002		
SIZE	FSCM NO.	DWG NO.	REV.		
A	60483	100-7320	-		
SCALE N:S		SHEET		2 OF 3	

